

EMERGENCY SHELTER PROGRAM

TYPE 1 Shelter Specifications



Dimensions:

Width: 9'-7" (2.92m)
Length: 11'-4 1/2" (3.47m)
Ceiling Height: 9'-0" vaulted to 11'-4" (2.74m to 3.45m)
Floorspace: Shelter | 97 sq. ft. (9 sq. m)

Shelter Cover:

Cross woven metallized foil covering that is UV protected, resists fire, termites, mold, mildew and 97% of the sun's radiant energy. High performance in severe weather conditions including earthquakes.

Color:

White. Printed sponsorship logos are available.

Weight:

Approximately 200 lbs (90.7 kg)

Features:

- S2H provides an emergency/transitional shelter that can convert into a permanent home. A partnership with STUCC ON STEEL provides a light gauge galvanized steel panelized framing system and a synthetic UV resistant/weatherproof covering that protects occupants from the elements. Components can be either manufactured locally or shipped into the disaster area where they are assembled under the support and training of our staff. In the event that a shelter is no longer used or if another life threatening event is pending, the shelter can be disassembled down to individual components, put into safe storage, and reused again later without any loss of integrity.

General Description of Panelized Framing

- The proprietary light gauge galvanized steel panelized framing system comes "ready-to-assemble". No cutting is required. Panels can be buried 6 inches (15.2cm) into top soil with an additional 6 inch (15.2cm) raised soil fill floor for high wind stabilization. This will maintain an 8 foot (2.44m) ceiling along outside edges. Framing components could carry (at least) a 5 year warranty.

Doors

- There is one (1) door on the structure which is part of the building cover and is opened and closed using a zipper. This system is removed later when converted to a permanent home.

Windows and Ventilation

- There is one (1) window in the structure which is part of the building cover and utilizes an assembly of transparent plastic and protective insect netting. This window can later be replaced with a permanent window. Ridge and eave vents provide additional natural ventilation.

Optional Anchoring System

- The structure, while being used for temporary shelter, can be secured to the ground for additional stability in high wind areas using four (4) guy lines which are attached to four (4) metal stakes.

Optional Solar Power Package

- The optional solar power package provides the following:
 - 1 Solar panel, 5 watt, with secure mounting structure
 - 2 LED lamps (DC-powered)
 - 1 voltage regulator
 - 1 rechargeable battery, sealed lead acid, 12 volt 7.2 amp-hour
 - 2 switches
 - 1 fuseholder with fuse, 5 amp.
 - 1 cell phone connector (optional)

Optional Rainwater Collection

- The optional rainwater collection package provides the following:
 - Safe low toxin metal roof, gutter and downspout.
 - Rain Barrel with elevated base
 - Filtration System
 - Spigot and/or hand pump.

 **All Building Components are 100% Recyclable.**

S2H



www.shelter2home.com
USA: 540-678-4186
P.O. BOX 3223 Winchester, VA 22604
dsteven@shelter2home.com

EMERGENCY SHELTER PROGRAM

TYPE 2 Shelter Specifications



Dimensions:

Width: 11'-4 1/2" (3.47m)
Length: 19'-2" (5.84m)
Ceiling Height: 9'-0" vaulted to 11'-4" (2.74m to 3.45m)
Floorspace: Shelter | 97 sq. ft. (9 sq. m)
Covered Area | 109 sq. ft. (10.13 sq. m)

Shelter Cover:

Cross woven metallized foil covering that is UV protected, resists fire, termites, mold, mildew and 97% of the sun's radiant energy. High performance in severe weather conditions including earthquakes.

Color:

White. Printed sponsorship logos are available.

Weight:

Approximately 300 lbs (136 kg)

Features:

■ S2H provides an emergency/transitional shelter that can convert into a permanent home. A partnership with STUCC ON STEEL provides a light gauge galvanized steel panelized framing system and a synthetic UV resistant/weatherproof covering that protects occupants from the elements. Components can be either manufactured locally or shipped into the disaster area where they are assembled under the support and training of our staff. In the event that a shelter is no longer used or if another life threatening event is pending, the shelter can be disassembled down to individual components, put into safe storage, and reused again later without any loss of integrity.

General Description of Panelized Framing

■ The proprietary light gauge galvanized steel panelized framing system comes "ready-to-assemble". No cutting is required. Panels can be buried 6 inches (15.2cm) into top soil with an additional 6 inch (15.2cm) raised soil fill floor for high wind stabilization. This will maintain an 8 foot (2.44m) ceiling along outside edges. Framing components could carry (at least) a 5 year warranty.

Doors

■ There is one (1) door on the structure which is part of the building cover and is opened and closed using a zipper. This system is removed later when converted to a permanent home.

Windows and Ventilation

■ There are two (2) windows in the structure which are part of the building cover and utilize an assembly of transparent plastic and protective insect netting. These windows can later be replaced with permanent windows. Ridge and eave vents provide additional natural ventilation.

Optional Anchoring System

■ The structure, while being used for temporary shelter, can be secured to the ground for additional stability in high wind areas using six (6) guy lines which are attached to six (6) metal stakes.

Optional Solar Power Package

■ The optional solar power package provides the following:

- 1 Solar panel, 5 watt, with secure mounting structure
- 2 LED lamps (DC-powered)
- 1 voltage regulator
- 1 rechargeable battery, sealed lead acid, 12 volt 7.2 amp-hour
- 2 switches
- 1 fuseholder with fuse, 5 amp.
- 1 cell phone connector (optional)

Optional Rainwater Collection

■ The optional rainwater collection package provides the following:

- Safe low toxin metal roof, gutter and downspout.
- Rain Barrel with elevated base
- Filtration System
- Spigot and/or hand pump.

 **All Building Components are 100% Recyclable.**

S2H



www.shelter2home.com
USA: 540-678-4186
P.O. BOX 3223 Winchester, VA 22604
dsteven@shelter2home.com

EMERGENCY SHELTER PROGRAM

TYPE 3 Shelter Specifications



Dimensions:

Width: 11'-4 1/2" (3.47m)
Length: 19'-3 1/2" (5.88m)
Ceiling Height: 9'-0" vaulted to 11'-4" (2.74m to 3.45m)
Floorspace: Shelter | 202 sq. ft. (18.77 sq. m)

Shelter Cover:

Cross woven metallized foil covering that is UV protected, resists fire, termites, mold, mildew and 97% of the sun's radiant energy. High performance in severe weather conditions including earthquakes.

Color:

White. Printed sponsorship logos are available.

Weight:

Approximately 400 lbs (181.4 kg)

Features:

■ S2H provides an emergency/transitional shelter that can convert into a permanent home. A partnership with STUCC ON STEEL provides a light gauge galvanized steel panelized framing system and a synthetic UV resistant/weatherproof covering that protects occupants from the elements. Components can be either manufactured locally or shipped into the disaster area where they are assembled under the support and training of our staff. In the event that a shelter is no longer used or if another life threatening event is pending, the shelter can be disassembled down to individual components, put into safe storage, and reused again later without any loss of integrity.

General Description of Panelized Framing

■ The proprietary light gauge galvanized steel panelized framing system comes "ready-to-assemble". No cutting is required. Panels can be buried 6 inches (15.2cm) into top soil with an additional 6 inch (15.2cm) raised soil fill floor for high wind stabilization. This will maintain an 8 foot (2.44m) ceiling along outside edges. Framing components could carry (at least) a 5 year warranty.

Doors

■ There is one (1) door on the structure which is part of the building cover and is opened and closed using a zipper. This system is removed later when converted to a permanent home.

Windows and Ventilation

■ There are three (3) windows in the structure which are part of the building cover and utilize an assembly of transparent plastic and protective insect netting. These windows can later be replaced with permanent windows. Ridge and eave vents provide additional natural ventilation.

Optional Anchoring System

■ The structure, while being used for temporary shelter, can be secured to the ground for additional stability in high wind areas using six (6) guy lines which are attached to six (6) metal stakes.

Optional Solar Power Package

■ The optional solar power package provides the following:

- 1 Solar panel, 5 watt, with secure mounting structure
- 2 LED lamps (DC-powered)
- 1 voltage regulator
- 1 rechargeable battery, sealed lead acid, 12 volt 7.2 amp-hour
- 2 switches
- 1 fuseholder with fuse, 5 amp.
- 1 cell phone connector (optional)

Optional Rainwater Collection

■ The optional rainwater collection package provides the following:

- Safe low toxin metal roof, gutter and downspout.
- Rain Barrel with elevated base
- Filtration System
- Spigot and/or hand pump.

 **All Building Components are 100% Recyclable.**

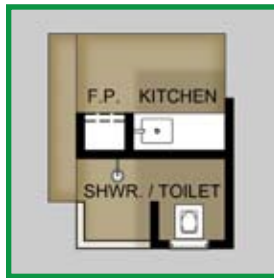
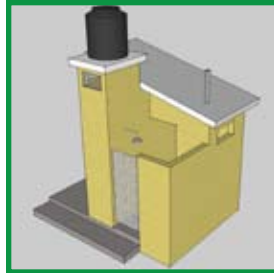
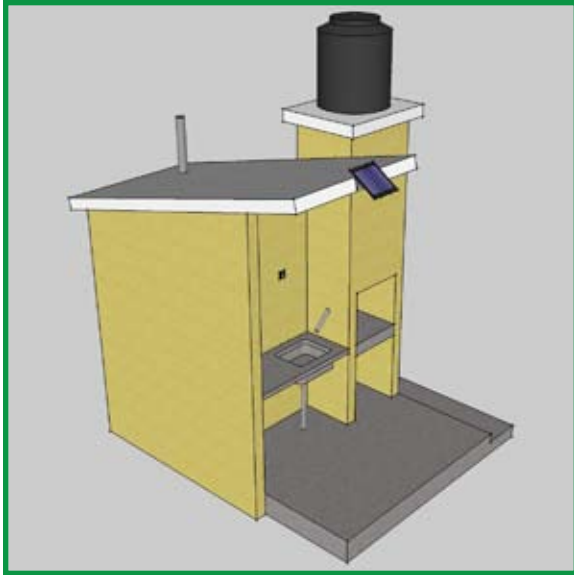
S2H



www.shelter2home.com
USA: 540-678-4186
P.O. BOX 3223 Winchester, VA 22604
dsteven@shelter2home.com

EMERGENCY SHELTER PROGRAM

Optional Permanent Utility Group Specifications



Dimensions:

Width: 9'-10 1/2" (3.01m)
 Length: 11'-6" (3.51m)
 Ceiling Height: 9'-0" vaulted open air (2.74m)
 Floorspace: Kitchen/Fireplace|53sq.ft.(4.92sq.m)
 Shower / Toilet | 33 sq. ft. (3.07 sq. m)

Exterior Finish:

Proprietary Structural Stucco

Color:

Numerous colored finish coatings are available.

Construction Duration:

Permanent structure can be easily completed in under seven (7) days

Features:

■ S2H provides this permanent structure that can be tied into a converted transitional structure. A partnership with STUCC ON STEEL provides a light gauge galvanized steel panelized framing system and a synthetic UV resistant/weatherproof covering that protects occupants from the elements. Components can be either manufactured locally or shipped into the disaster area where they are assembled under the support and training of our staff. In the event that a shelter is no longer used or if another life threatening event is pending, the shelter can be disassembled down to individual components, put into safe storage, and reused again later without any loss of integrity.

General Description of Panelized Framing

■ The proprietary light gauge galvanized steel panelized framing system comes "ready-to-assemble". No cutting is required. Panels can be buried 6 inches (15.2cm) into top soil with an additional 6 inch (15.2cm) raised soil fill floor for high wind stabilization. This will maintain an 8 foot (2.44m) ceiling along outside edges. Framing components could carry (at least) a 5 year warranty.

Optional Solar Power Package

- The optional solar power package provides the following:
 - 1 Solar panel, 5 watt, with secure mounting structure
 - 2 LED lamps (DC-powered)
 - 1 voltage regulator
 - 1 rechargeable battery, sealed lead acid, 12 volt 7.2 amp-hour
 - 2 switches
 - 1 fuseholder with fuse, 5 amp.
 - 1 cell phone connector (optional)

Optional Rainwater Collection

- The optional rainwater collection package provides the following:
 - Safe low toxin metal roof, gutter and downspout.
 - 500L Elevated Rain Barrel with siphon pump.
 - Filtration System
 - Spigot and/or hand pump.
 - Optional Gravity fed Shower and Kitchen Faucet
 - Optional Western Toilet Supply.

Additional Options

- The Utility Group can be provided with the following:
 - Plumbing Fixture Upgrades (Toilet, Shower Head, Faucets)
 - Drop-in Sink
 - Propane Tank for cooking
 - Translucent Shower Door

 All Building Components are 100% Recyclable.

S2H



www.shelter2home.com
 USA: 540-678-4186
 P.O. BOX 3223 Winchester, VA 22604
dsteven@shelter2home.com

EMERGENCY SHELTER PROGRAM

TYPE 4 Shelter Specifications



Dimensions:

Width: 11'-4 1/2" (3.47m)
Length: 17'-10 1/2" (5.45m)
Ceiling Height: 9'-0" vaulted to 11'-4" (2.74m to 3.45m)
Floorspace: Shelter | 143 sq. ft. (13.29 sq. m)
Gallery | 47 sq. ft. (4.37 sq. m)

Shelter Cover:

Cross woven metallized foil covering that is UV protected, resists fire, termites, mold, mildew and 97% of the sun's radiant energy. High performance in severe weather conditions including earthquakes.

Color:

White. Printed sponsorship logos are available.

Weight:

Approximately 350 lbs (159 kg)

Features:

■ S2H provides an emergency/transitional shelter that can convert into a permanent home. A partnership with STUCC ON STEEL provides a light gauge galvanized steel panelized framing system and a synthetic UV resistant/weatherproof covering that protects occupants from the elements. Components can be either manufactured locally or shipped into the disaster area where they are assembled under the support and training of our staff. In the event that a shelter is no longer used or if another life threatening event is pending, the shelter can be disassembled down to individual components, put into safe storage, and reused again later without any loss of integrity.

General Description of Panelized Framing

■ The proprietary light gauge galvanized steel panelized framing system comes "ready-to-assemble". No cutting is required. Panels can be buried 6 inches (15.2cm) into top soil with an additional 6 inch (15.2cm) raised soil fill floor for high wind stabilization. This will maintain an 8 foot (2.44m) ceiling along outside edges. Framing components could carry (at least) a 5 year warranty.

Doors

■ There is one (1) door on the structure which is part of the building cover and is opened and closed using a zipper. This system is removed later when converted to a permanent home.

Windows and Ventilation

■ There are two (2) windows in the structure which are part of the building cover and utilize an assembly of transparent plastic and protective insect netting. These windows can later be replaced with permanent windows. Ridge and eave vents provide additional natural ventilation.

Optional Anchoring System

■ The structure, while being used for temporary shelter, can be secured to the ground for additional stability in high wind areas using six (6) guy lines which are attached to six (6) metal stakes.

Optional Solar Power Package

■ The optional solar power package provides the following:

- 1 Solar panel, 5 watt, with secure mounting structure
- 2 LED lamps (DC-powered)
- 1 voltage regulator
- 1 rechargeable battery, sealed lead acid, 12 volt 7.2 amp-hour
- 2 switches
- 1 fuseholder with fuse, 5 amp.
- 1 cell phone connector (optional)

Optional Rainwater Collection

■ The optional rainwater collection package provides the following:

- Safe low toxin metal roof, gutter and downspout.
- Rain Barrel with elevated base
- Filtration System
- Spigot and/or hand pump.

 **All Building Components are 100% Recyclable.**

S2H



www.shelter2home.com
USA: 540-678-4186
P.O. BOX 3223 Winchester, VA 22604
dsteven@shelter2home.com

PERMANENT HOME TRANSITION

TYPE 4 Shelter: Progressive Transition Phasing



1

Phase One: Shelter

- Once a family takes possession of a shelter, they take the first step toward ownership of their own home. The shelter can be moved around as needed and stabilized by burying it partially in the ground and adding a raised dirt floor internally.



2

Phase Two: Community Utilities

- The shelters can be organized into community clusters. A permanent “Utility Group” can be built and shared within a cluster in close proximity to the shelters. The “Utility Group” should be built on an adequate parcel of land that will allow a shelter to be permanently connected at a future time.



3

Phase Three: Home

- When a family is ready to settle on a permanent parcel of land they can connect their shelter to a “Utility Group”. The shelter is then converted to a permanent home using the final components of the STUCCO ON STEEL process.

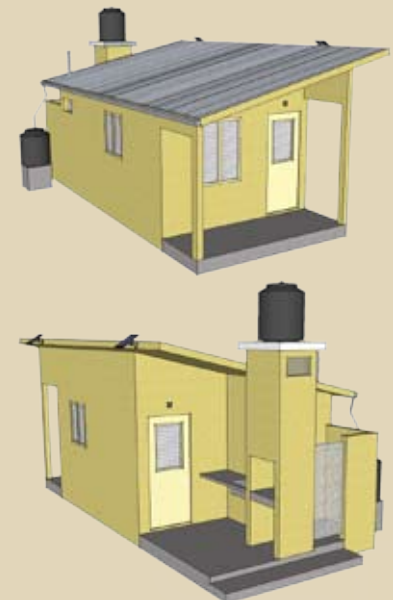
Features:

- Phase Three provides all the benefits of Phase One plus:
 - Components can be made in country using locally supplied raw materials (steel, cement, and sand) when available.
 - Faster completion
 - Unlimited design options
 - Reduced shipping costs
 - Creates new jobs
 - Supports Homeowner driven housing schemes
 - Short and/or long term manufacturing options

 All Building Components are 100% Recyclable.

Progressive Housing Solution

- The Progressive Housing Solution (Utility Group + Core House) will provide the basic single room structure, latrine, shower and cooking area. As the Homeowner becomes financially capable, they can take advantage of additional accommodations such as solar/wind power generating systems that will power LED lights, water filtration systems, and have the capability to charge laptops and cell phones. The format of the plan also allows the Homeowner to methodically increase the size of their existing home.



www.shelter2home.com

USA: 540-678-4186

P.O. BOX 3223 Winchester, VA 22604

dstevens@shelter2home.com